

IPS 2024



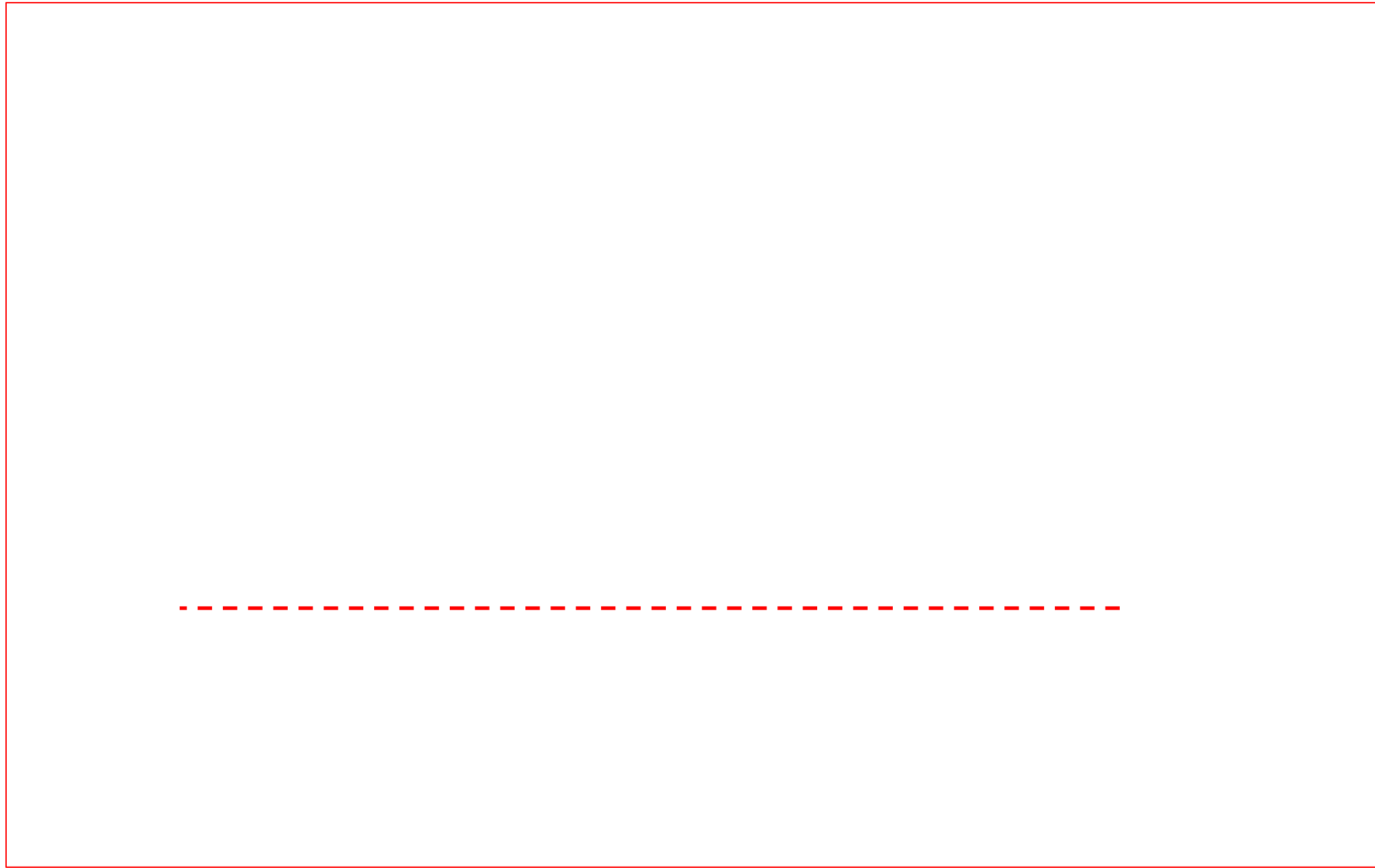
IPS 24-8.3

Value of Oriented Perforating in Unconventional Wells- A Case Study

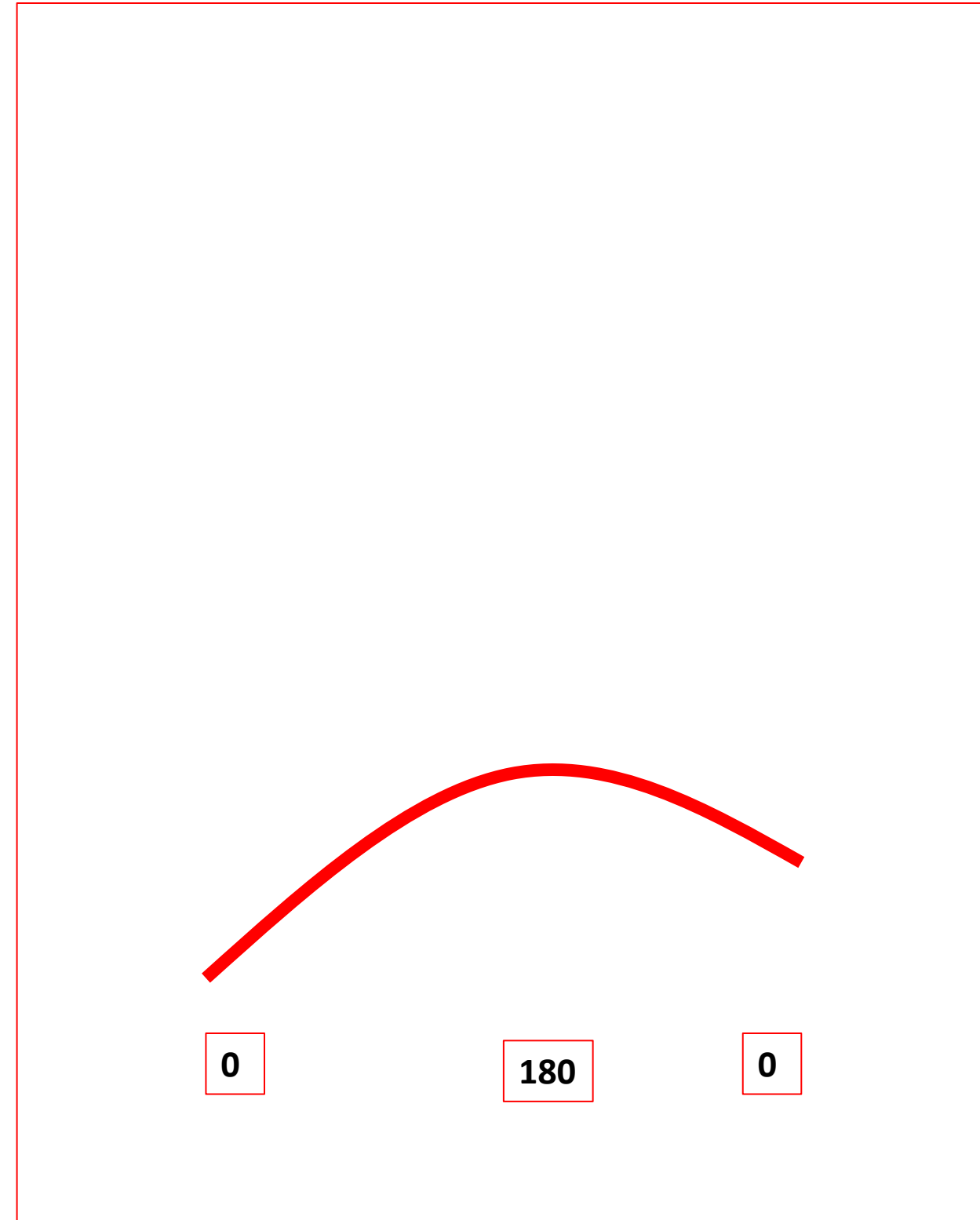
**Presented by:
Bharath Rajappa, ConocoPhillips**

Agenda

- What started all this within ConocoPhillips L48 ?
- Unconventional Case Study background
- Data Analysis/Observations

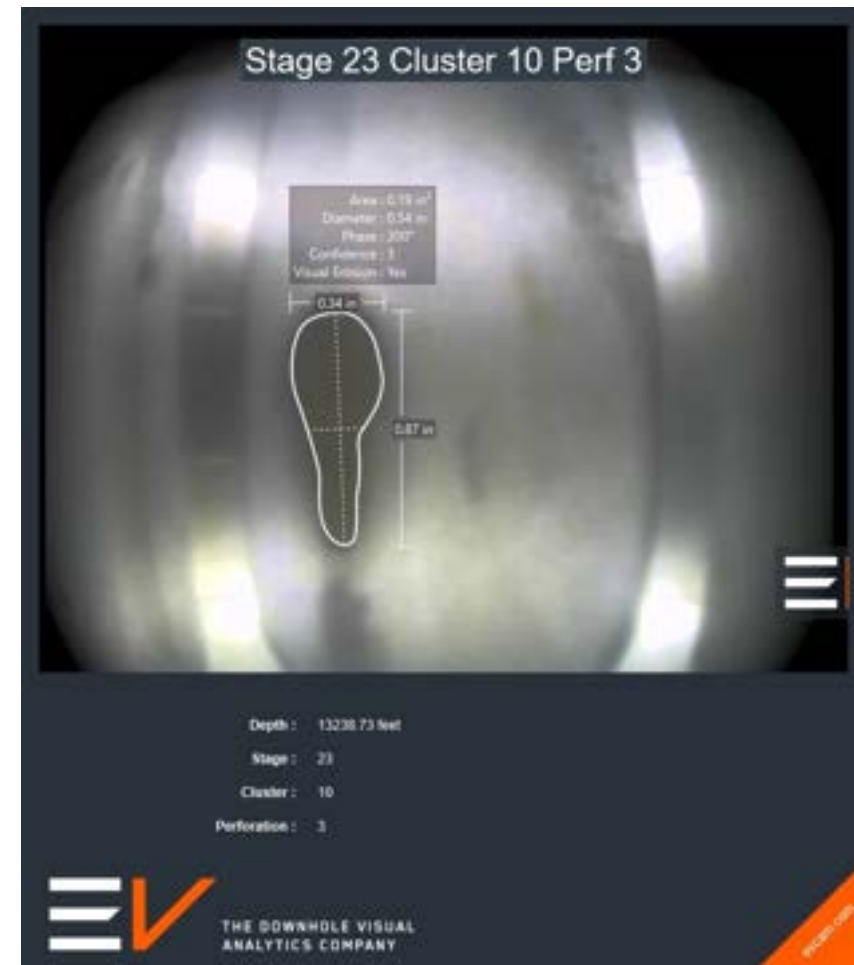


- Plan was to test extreme limited entry in certain stages and verify with camera (*10 clusters/stage @ 4-5 spf, 60 degree phasing, 0.33" EHD*)
- *Observation of uneven erosion*
- *Low side EHD >> High Side*



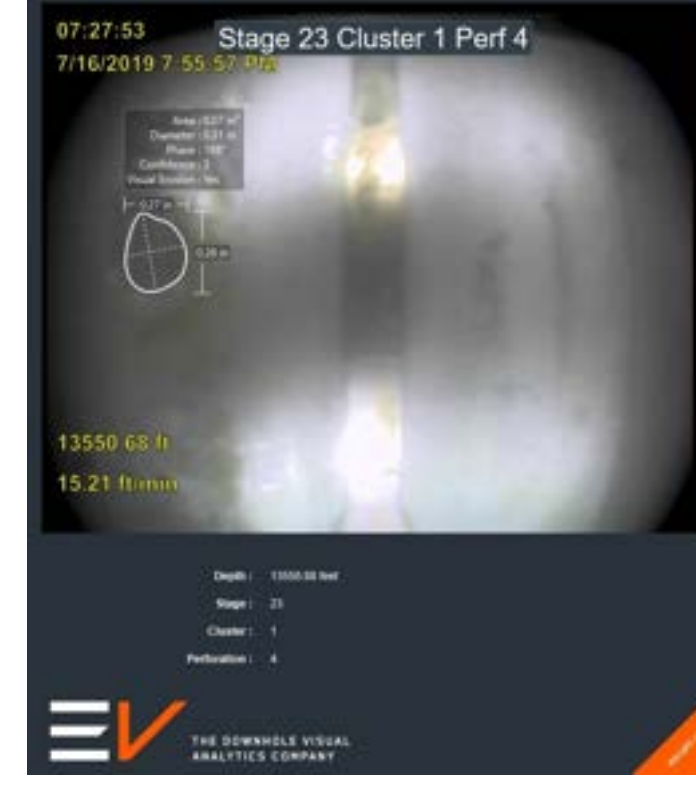
Example acquired and measured image

Stage 23, Cluster 10

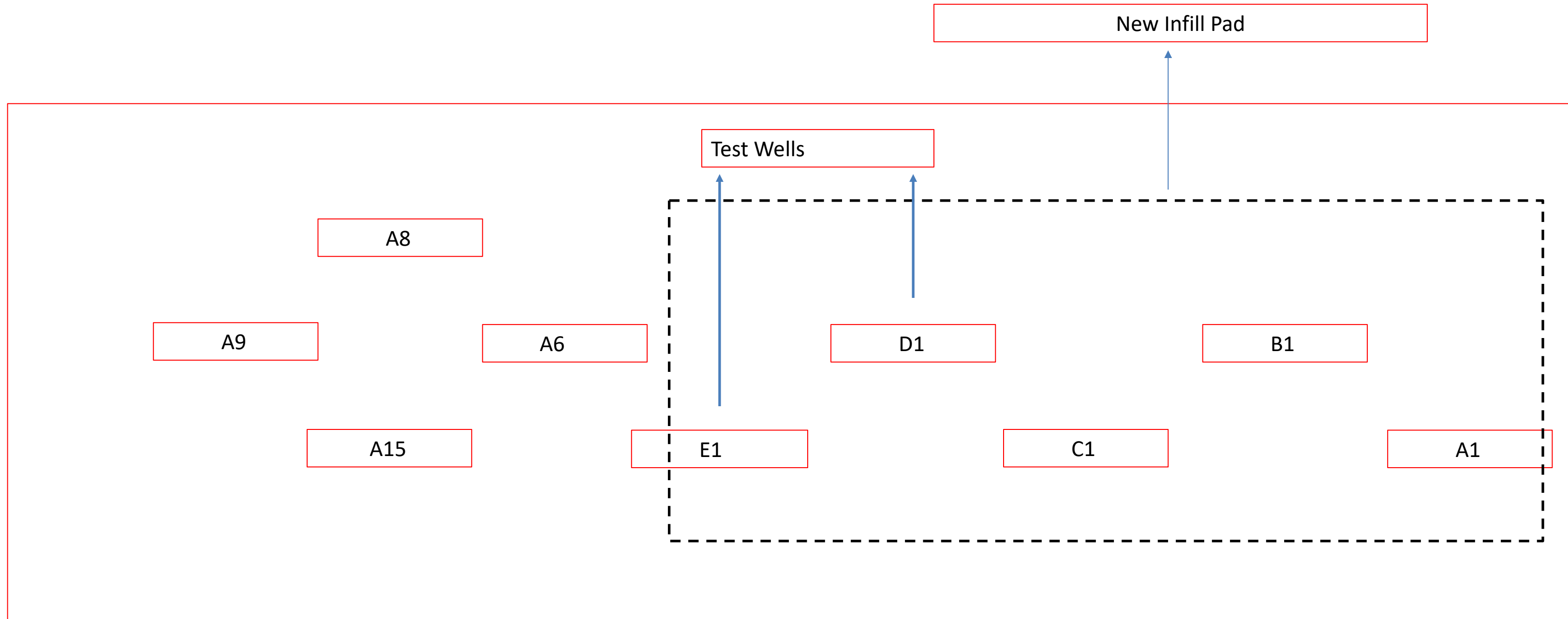


Example acquired and measured image

Stage 23, Cluster 1



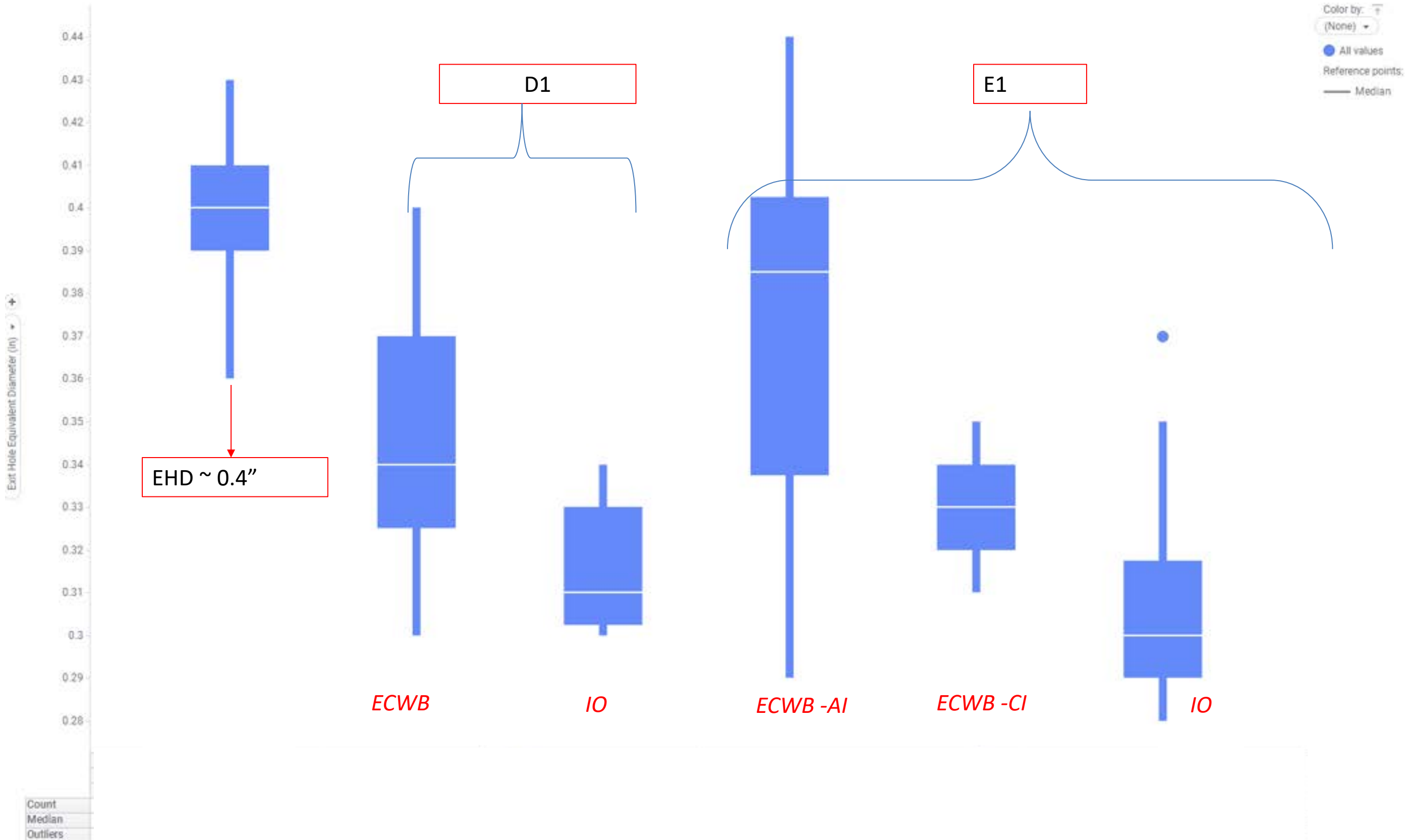
- Industry now looking at internal orienting options
- Unconventional Case Study background



Infill Pad

- Historically COP focused on eccentric weight bar (ECWB) oriented to high side
- Infill wells provided an opportunity to test ECWB vs. Internal Orientation
- Subject wells D1 & E1 chosen to test orientation (10k ft laterals)
 - Toe half - Standard ECWB guns
 - Heel half - Internal Orientated guns
- Infill wells perforation design
 - D1/E1 - 10 clusters x 2 spf (0.42")
- A1/B1/C1 - All 3 wells had standard ECWB orientation
 - 10 clusters x 3 spf (0.42")

Base hole variance

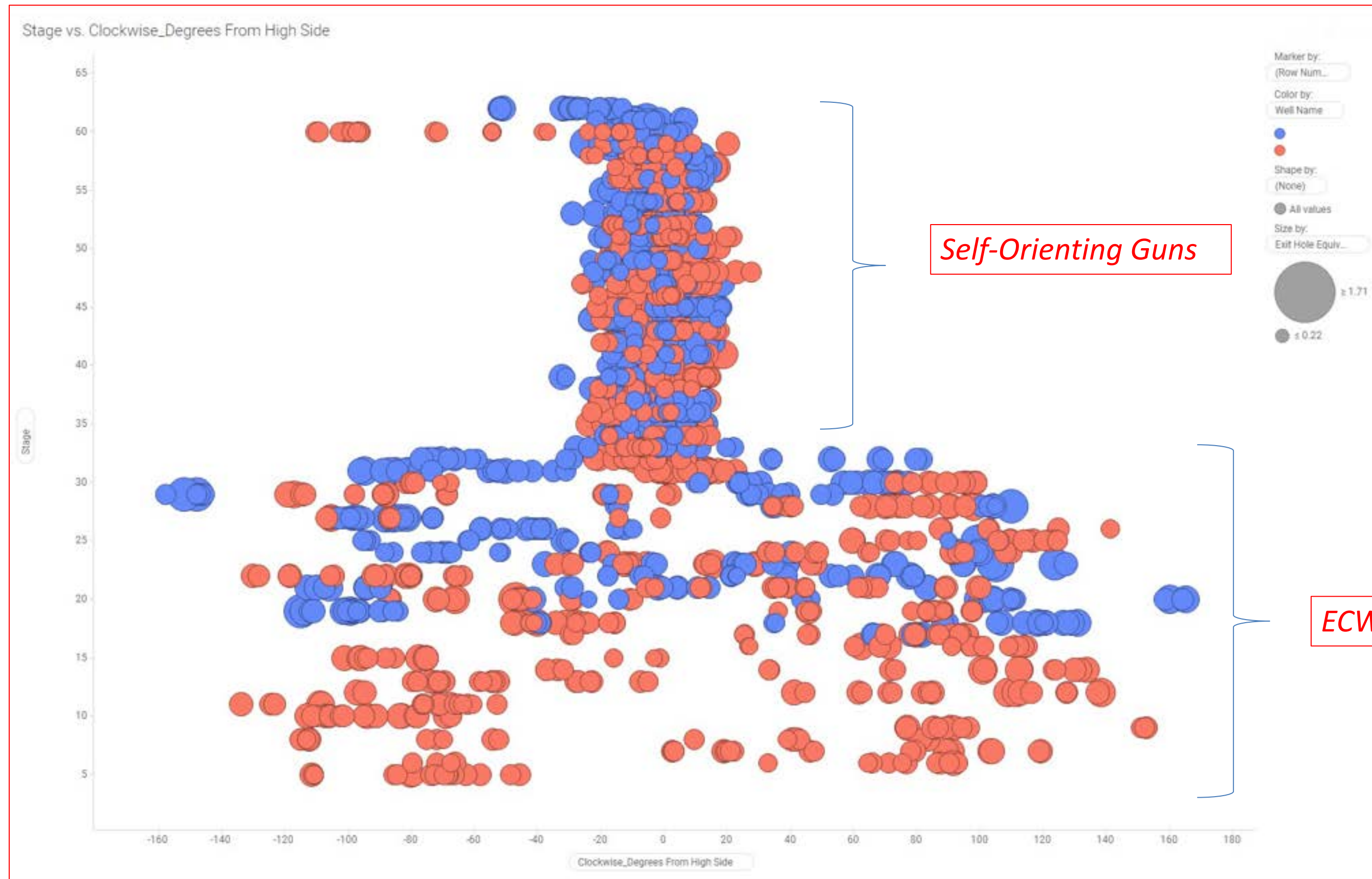


Surface QC EHD ~0.4 "

*Acoustic Imaging
downhole ~0.31"*

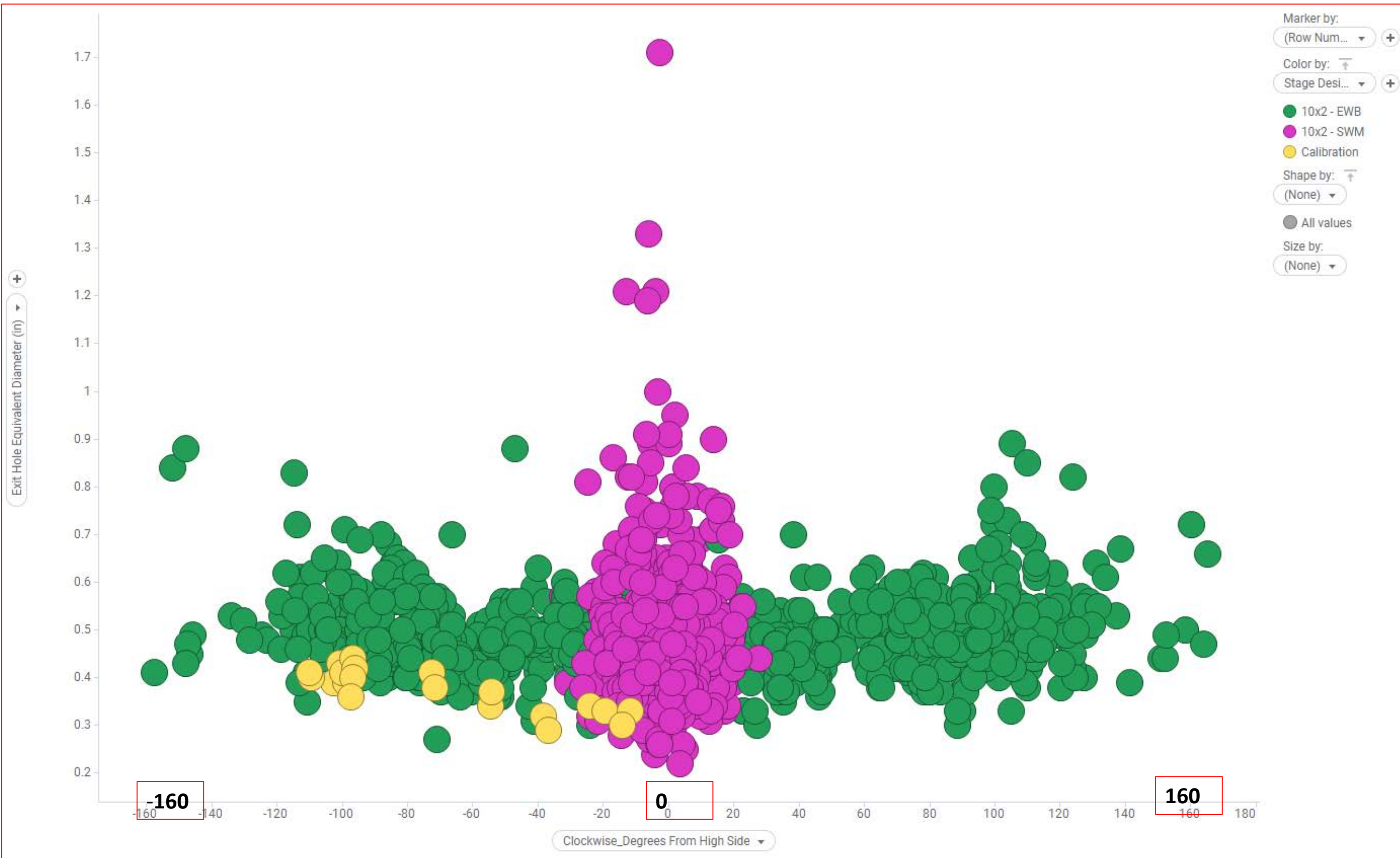
*Camera Imaging
downhole ~ 0.33"*

IO vs. ECWB



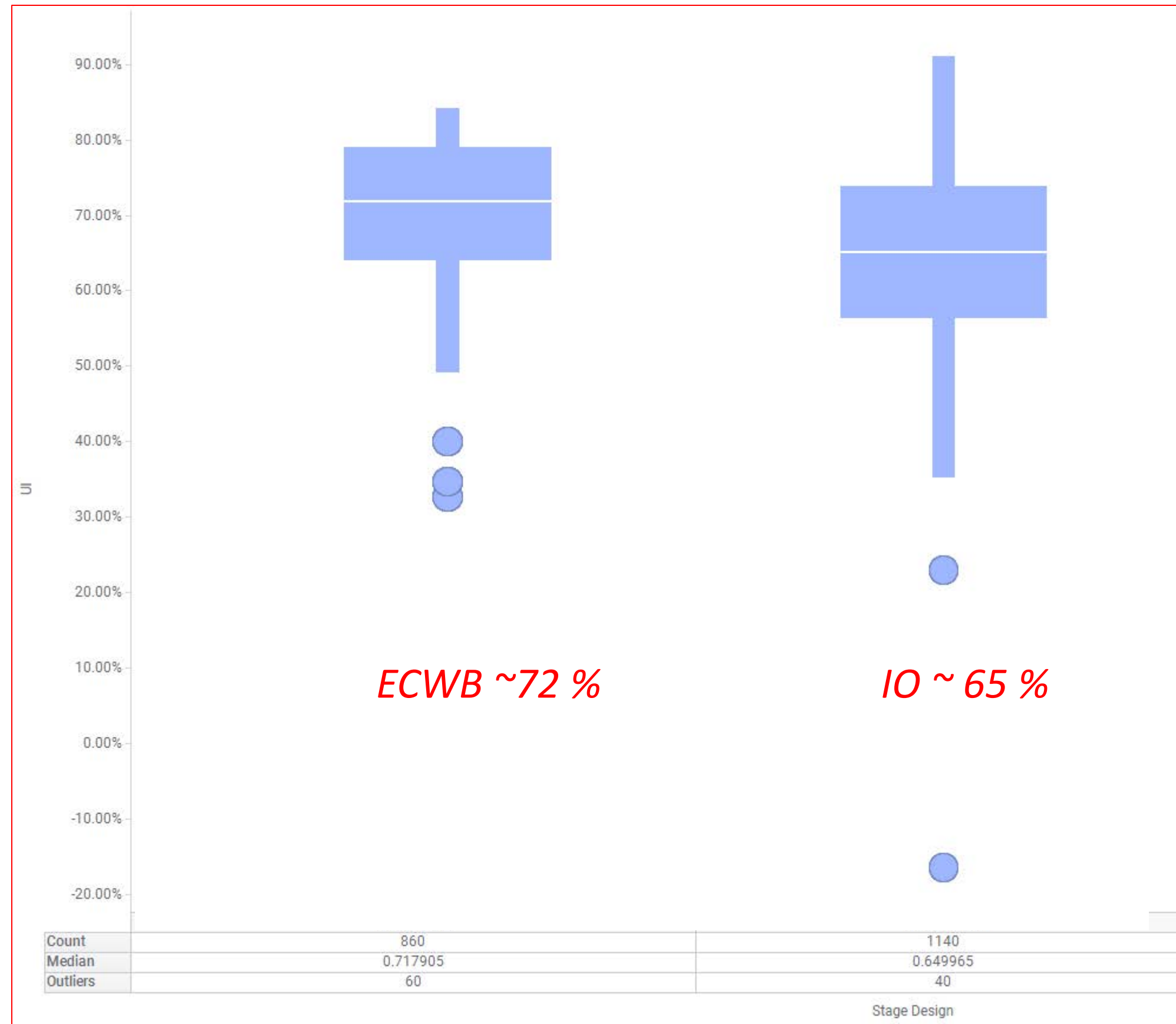
Self-orienting guns get their \$ worth

EHD vs. Orientation

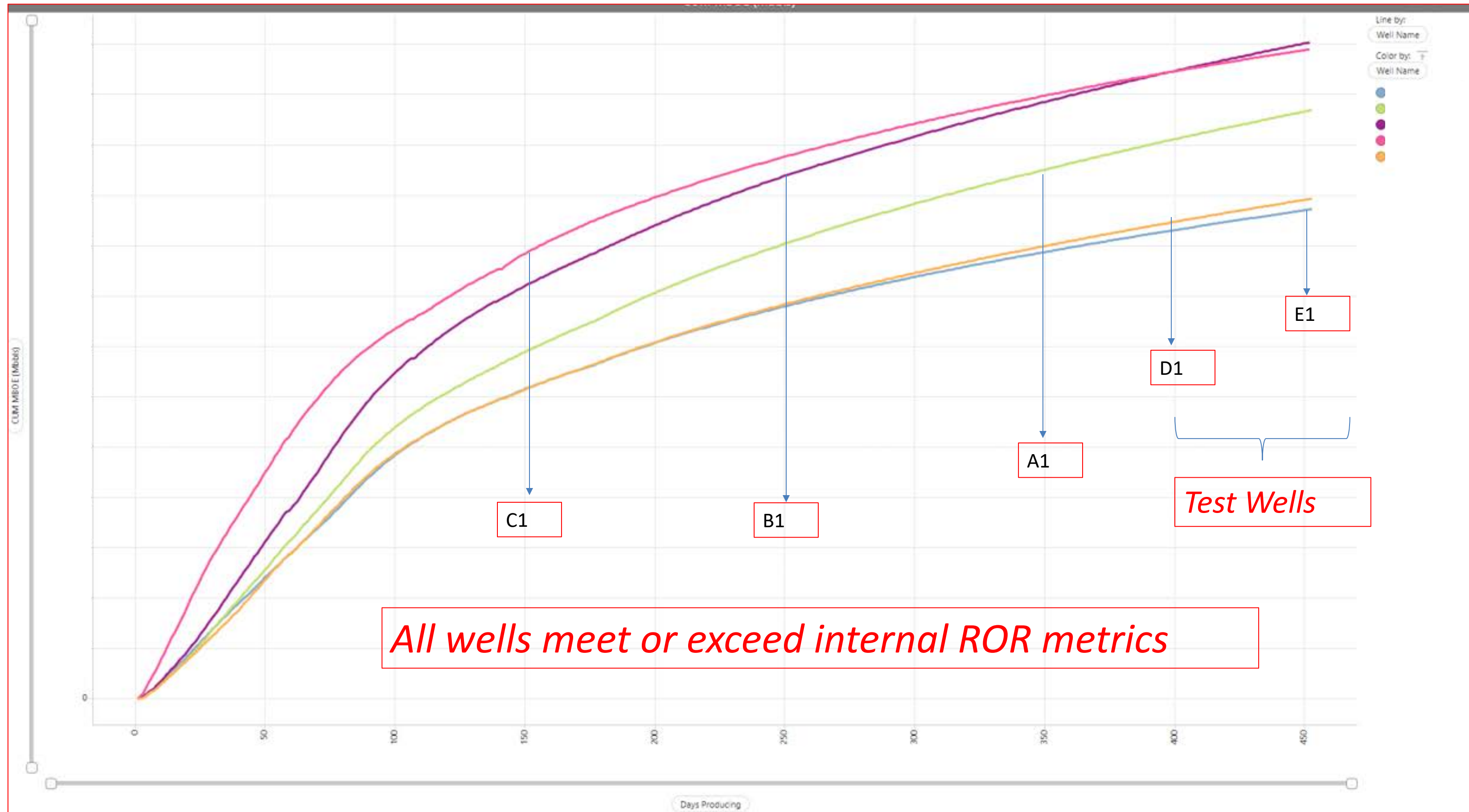


Few oddities noticed on high side run away clusters

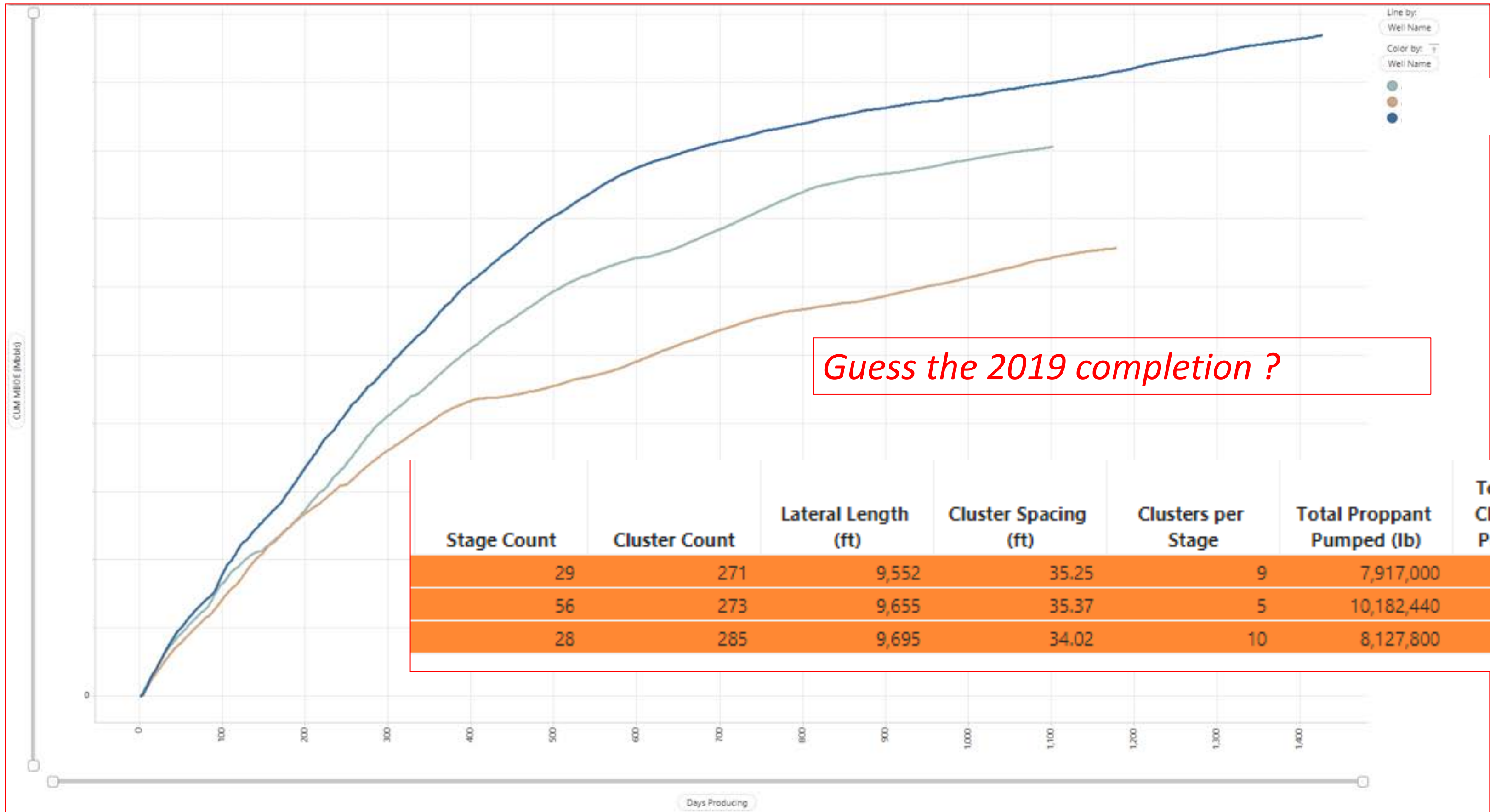
Uniformity Index (based on exit area)



Production Tales



2019 Well Review



Results

- High side orientation has shown benefits in attempting to maintain consistent entry hole size
- Does orientation matter when it comes to production analysis ?
- Why pay top \$\$ when one cannot attribute production uplift solely to perforation criteria ?

QUESTIONS?

MAY 13-15



IPS 2024

Value of Oriented Perforating in Unconventional Wells- A Case Study